



1612 N Broad Street
Lansdale, Pa 19446
(215) 362 - 7368

44 W Ridge Pike
Limerick, Pa 19468
(610) 489 - 2334

Cotton Candy Instructions

DO NOT IMMERSE THE EQUIPMENT IN WATER. KEEP HANDS AND FACE CLEAR OF THE FLOSS HEAD TO AVOID INJURY. KEEP ALL FOREIGN OBJECTS OUT OF FLOSS HEAD.

The cotton candy machine requires a 15 amp, 120 volt, 60 cycle electrical service.

OPERATING INSTRUCTIONS:

1. Place the stainless steel tub over the floss head. Insert the floss stabilizer (plastic net) in the tub per the instructions on page 2. Position the plastic cover on the side opposite where the operator will be standing.
2. With the main switch still OFF, fill floss head with floss sugar provided by A to Z Party Rental. Always fill it 90% full with sugar. Do Not Overfill. Excessive vibration will occur if overfilled. Before turning the power on, manually turn the head to balance out the sugar.
3. Turn "MAIN SWITCH" and "HEAT SWITCH" "ON".
4. Turn heat control knob clockwise to maximum setting to initiate the fastest possible warm up.
5. The machine should start making floss in a few seconds. When the unit starts making floss you must reduce the heat setting. Turn the heat control knob counter clockwise to eliminate smoking. If you operate the unit at "start up" setting you will carbonize the ribbon.

NEVER operate equipment for a prolonged period of time with the HEAT CONTROL in a position that causes the sugar to smoke. If you smell burning sugar or see smoke, reduce the heat.

6. Once you find the ideal setting for the HEAT CONTROL, operate with the setting near this position each time.
7. Review the demonstration on page 3 for making floss.

SHUT DOWN / CLEANING PROCEEDURE:

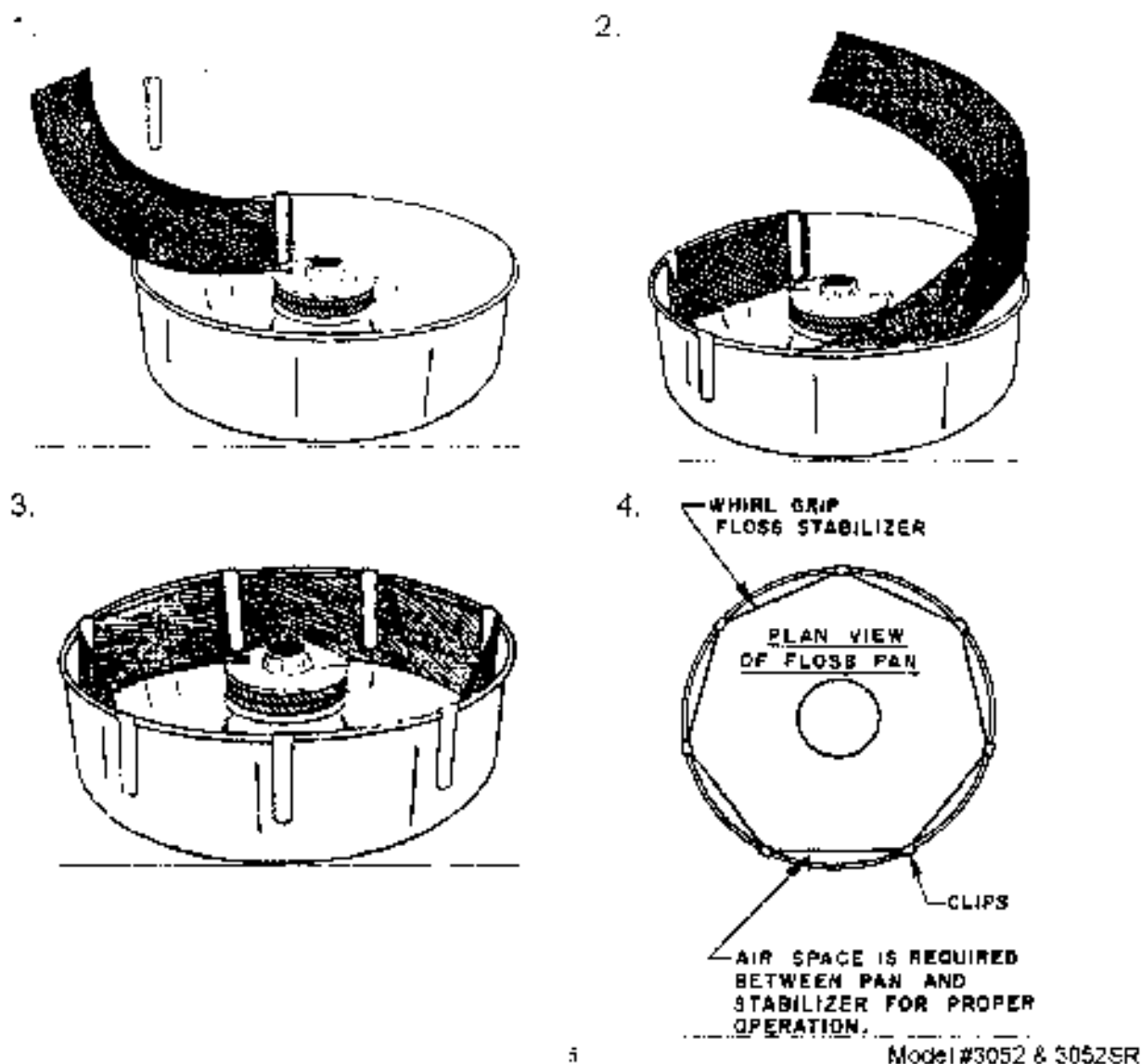
When completing operation for the day turn the HEAT SWITCH and MAIN SWITCH to OFF. Empty extra sugar from the floss head. Wipe the bowl and bubble with soap and a soft, damp towel.

Sugar for Your Cotton Candy

Our ready to use FLOSSUGAR is the preferred sugar for your new cotton candy machine. Our FLOSSUGAR gives you good rich colors, and great flavors, too. It is packed in handy half-gallon sealed cartons, with E-Z pour spout for filling your machine. FLOSSUGAR comes in 12 flavors, and you can easily change colors for greatest variety, and best sales.

Today 99% of the sugar manufactured is "Extra Fine Granulated" which does have some small particles that can slip through the slots in the spinner head without being melted. You can use plain white cane or beet sugar. If this becomes objectionable, you can seek out Medium Coarse, or sanding sugars. The larger crystal size will require a little more heat to melt. Read the label on the bag of sugar—today we see some "Free Flowing" sugar for restaurants, and it contains cornstarch, which will burn onto your spinner head, clogging it rapidly. We have also seen some cheap off-brand "sugar" which is a blend of sugar and dextrose or corn syrup. This product makes very poor cotton candy. Please make sure you get good sugar for your cotton candy machine.

Installation of Floss Stabilizer



MAKING FLOSS

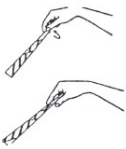


Pick a cone; if it sticks in the stack of cones, twist it off the stack.

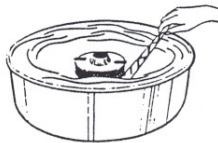
Hold an inch or two of the pointed end of the cone between two fingers and a thumb. With a light flicking action, roll cone in the web of floss building up in the pan. Lift the cone up with the ring of floss attached and rotate the cone to wrap the floss. **DO NOT** roll floss while the cone is inside the pan. This will pack the floss too tightly.

If the floss fails to stick to the cone, pass the cone near the spinner head to pick up a "starter" of melted sugar. Lift the cone out of the pan and wrap the floss with a "figure eight" movement of the hand. This leaves giant pockets and makes the final product appear larger. Make sure room humidity is not too high, or product will be "heavy".

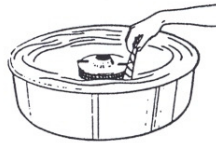
1. Grip cone as shown.



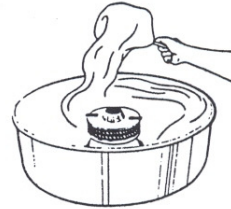
2. Break into web of floss with the cone.



3. Wind the sugar onto the cone.



4. Lift web of floss from the pan and roll onto the cone.



5.



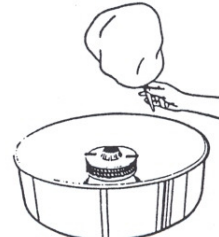
6.



7.



8.



- DO NOT PUT HANDS OR OBJECTS IN ROTATING SPINNER HEAD.
- DO NOT FILL SPINNER HEAD WITH SUGAR WHILE IT IS ROTATING.
- OPERATOR SHOULD WEAR EYE PROTECTION.
- DO NOT PUT HANDS NEAR ROTATING SPINNER HEAD.
- USE FLOSS CONE TO COLLECT COTTON CANDY.